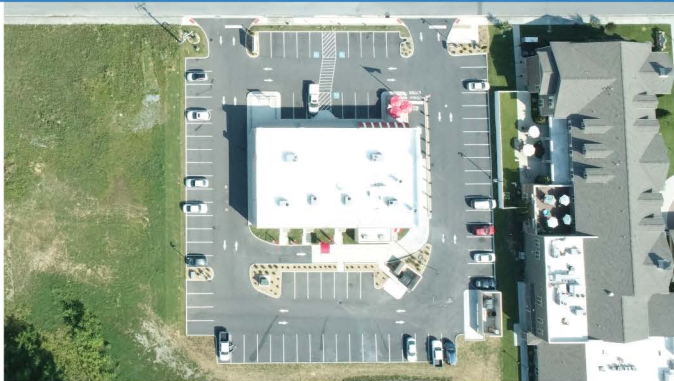




# CENTER AT WEST ELK

1500 West Elk Avenue  
Elizabethton, TN 37643



## DEMOGRAPHICS

- 1 mile radius - Population: 2,994  
Income: \$68,069
- 3 mile radius - Population: 20,117  
Income: \$61,417
- 5 mile radius - Population: 39,185  
Income: \$61,694



Scan the QR Code,  
or check us out  
on the web at  
[KBMCP.com](http://KBMCP.com)

## Property Information

- Price available upon request
- Total Square Footage: 7,000 SF
- Traffic Count @ West Elk Avenue:  
24,000 - 26,000
- Excellent visibility along with ample parking.
- Located along the Tweetsie Trail & across the street from hospital and medical offices.
- Minutes from local elementary and high school. 10 minutes from Milligan University.
- Direct ingress/egress from West Elk Avenue - One of the few shopping centers in the area with this convenience.

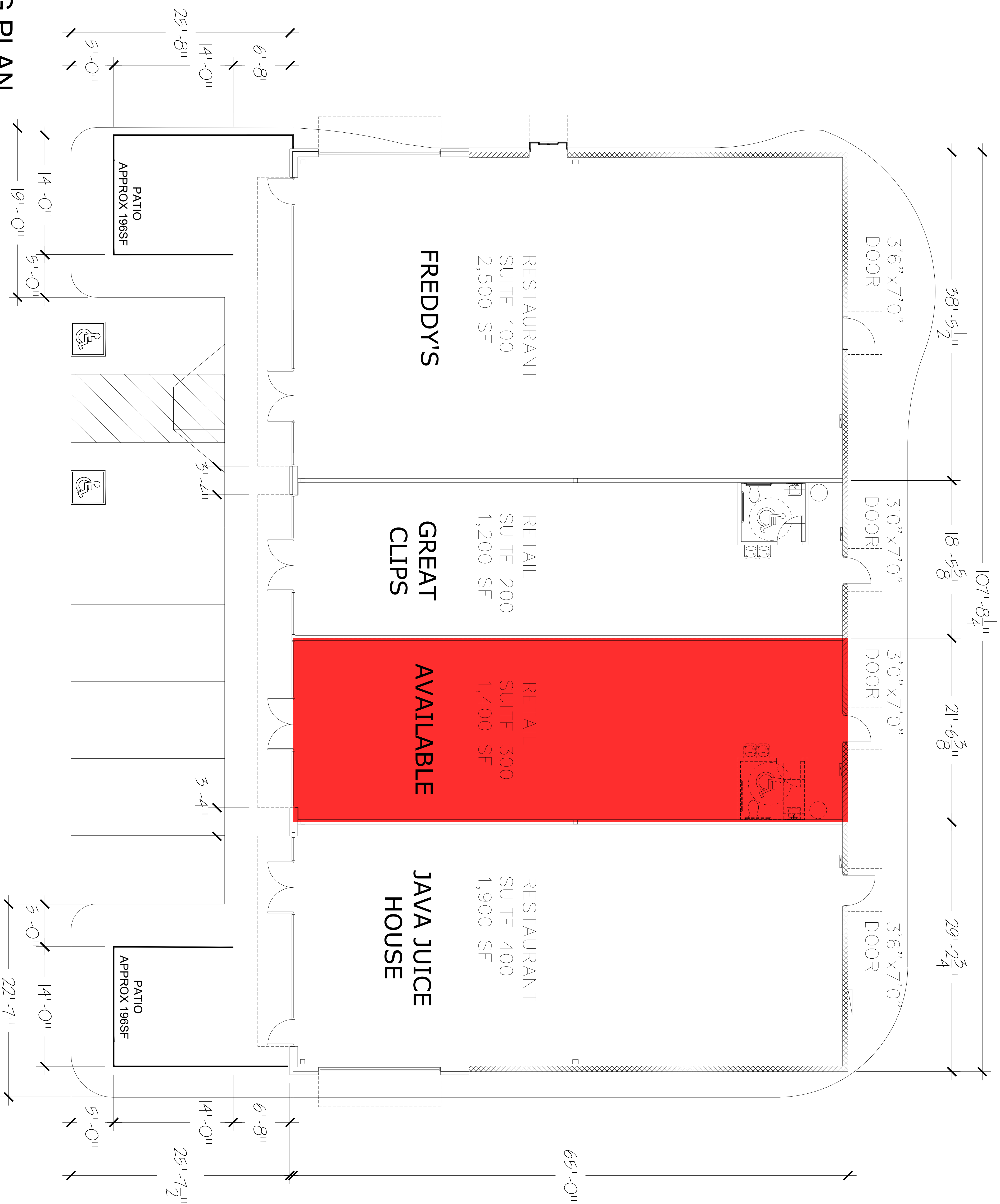
**KBM** commercial properties   
keeping you in our sites

1550 Highway 126  
Bristol, TN 37620  
(423) 968-3321

In Association With:



This drawing is the property of TRUE LINE Construction Company, LLC (TLC) and any use, reuse, reproduction, display or sale of this drawing without the express written consent of TRUE LINE Construction Company, LLC is prohibited. This drawing is NOT to be used for the purpose of bid solicitation. ALL COPYRIGHT LAWS WILL APPLY.



**MARKETING PLAN**  
7,000 SF  
(Subject to Change)



**CONSTRUCTION COMPANY, LLC**  
COMMERCIAL, RETAIL, RESIDENTIAL & CHURCH BUILDERS  
1550 HIGHWAY 126 BRISTOL, TN 37620 423-968-9164  
www.truelinellc.com



1550 HIGHWAY 126 BRISTOL, TN 37620  
423-968-3321  
MANAGING COMPANY

A NEW DEVELOPMENT FOR:  
**THE CENTER AT WEST ELK**  
LOCATION: ELIZABETHTON, TN

REVISIONS:

| No. | Date |
|-----|------|
|     |      |
|     |      |
|     |      |
|     |      |
|     |      |
|     |      |
|     |      |
|     |      |
|     |      |
|     |      |

REVISIONS DOCUMENT  
 CONSTRUCTION DOCUMENT  
 DOCUMENT DOCUMENT  
 DOCUMENT DOCUMENT

Project number: \_\_\_\_\_  
 Date: \_\_\_\_\_  
 Drawn by: \_\_\_\_\_  
 Checked by: \_\_\_\_\_

**FLOOR**

Scale: \_\_\_\_\_